

# KatGuide Userguide

INSTRUCTIONS FOR USING THE KATGUIDE

FIG. A

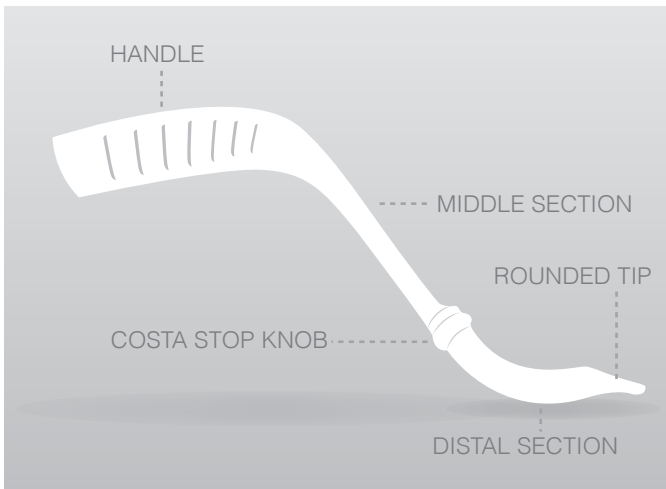
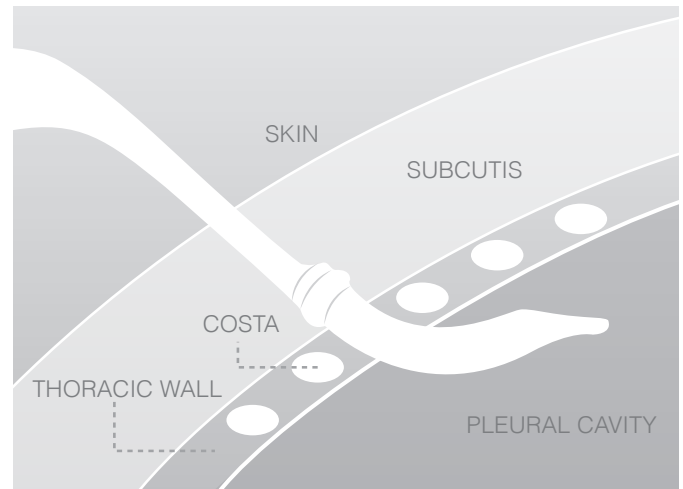


FIG. B



The KatGuide has a handle, a middle section and a distal section. Between the middle section and the distal section there is a costa stop knob. The KatGuide has a rounded tip to prevent damaging the lung.

Only the distal section must enter the pleural cavity. The middle section must not enter the pleural cavity (fig. B)

## INDICATION:

Insertion of large bore chest tube (Ch 28) into the pleural cavity.

## CHEST TUBE INSERTION:

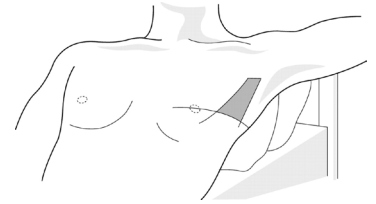
Get access to the pleural cavity by following the BTS guidelines:

- 1) Incision through the skin in the safe area.
- 2) Dissection with a forceps to the pleural cavity
- 3) Ensure with a finger that the pleural cavity has been entered.

Insert the distal part of the KatGuide into the pleural cavity and let the distal part point in the desired direction. You can see the direction of the chest tube inside the pleural cavity by looking at the handle during insertion. Insert the chest tube through the middle section and to the desired dept, while holding the handle parallel to the skin surface. Hold the chest tube while removing of the KatGuide - to prevent retracting the tube during removal. Fixate the chest tube.

# KatGuide Userguide

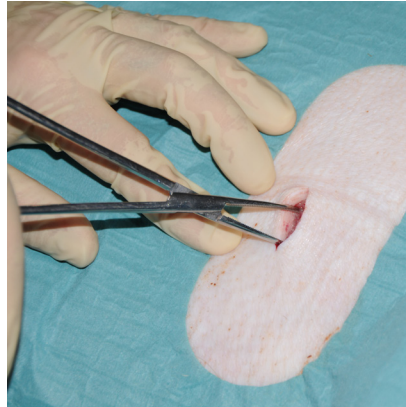
INSTRUCTIONS FOR USING THE KATGUIDE



\*) "Safe area"



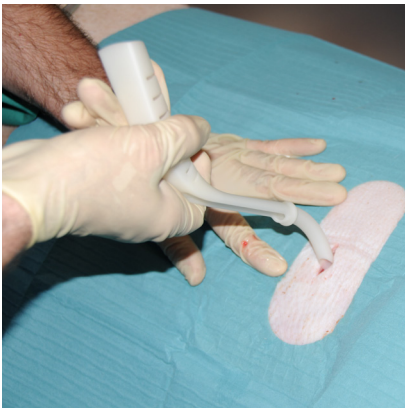
**1** Incision through the skin in "the safe area" \*)



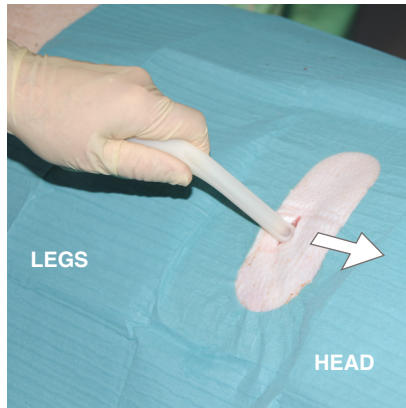
**2** Dissection with forceps into the pleural cavity



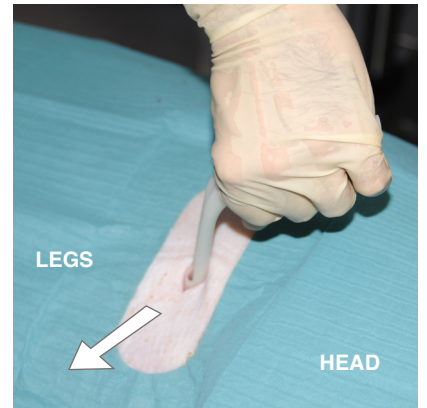
**3** Ensure with a finger, that the pleural cavity is entered



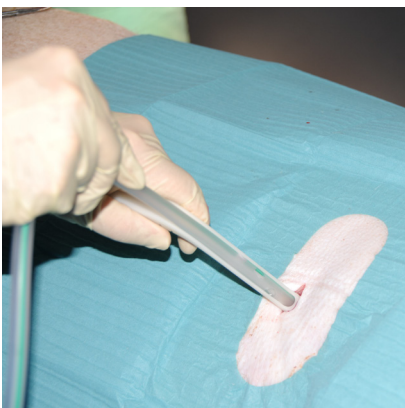
**4** Insert only the distal part into the pleural cavity. **Attention** – stop knob outside costae



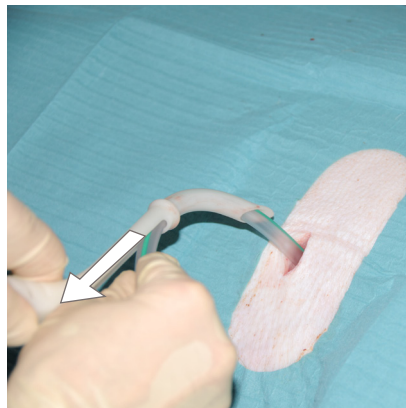
**5a** Point KatGuide in desired direction (here to the top)



**5b** Point KatGuide in desired direction (here to the bottom)



**6** Insert the chest tube through the KatGuide



**7** Remove the KatGuide (push and pull technique)



**8** When the KatGuide is removed, the chest tube is fixed to the skin